



iB Management Solutions Ltd

presents

The eTag Key Management Solution



- The one size fits all mentality does not work well. It's all about choice...
- **YOUR CHOICE**
- **What can we do for you?**



Choose the right size cabinet for your business – only pay for what you need!

- We offer three sizes of cabinet.
- Each cabinet is populated with receptor strips.
- **Single receptor strips** – capacity 10 keys.
- **Double receptor strips** – capacity 20 keys.
- Six inch deep cabinets are designed to take up only wall space, not valuable floor space.



Traka Secure Cabinets

The Traka 'Mini' (M) Series Cabinet

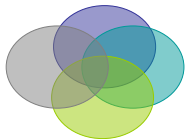
- Our smallest system
- Holds between 10 and 20 keys or rings of keys (1-2 strips)
- Wall mounted
- 790mm W x 340mm H x 150mm D



Traka Secure Cabinets

The Traka (S) Series Cabinet

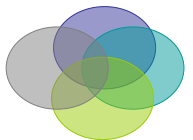
- The (S) Series cabinet holds between 10 and 60 keys (1-6 strips)
- Wall or stand mountable
- Extension cabinets expand capacity
- 740mm W x 650mm H x 150mm D



Traka Secure Cabinets

The Traka (L) Series Cabinet

- The (L) Series cabinet holds between 10 and 180 keys or rings of keys (1-18 strips)
- Floor and wall attachment
- Extension cabinets to expand capacity are available
- 815mm W x 1905mm H x 150mm D



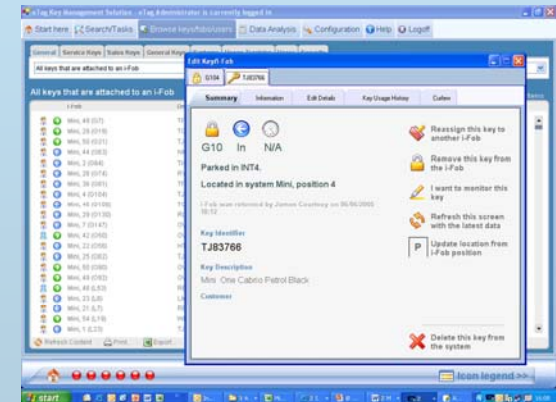
Intelligent Receptor Strips

- Make key check out and key return simple



Software License

- Software is installed on client PCs for users to assign / unassign keys to the system, search for keys, run reports etc.
- Software License is purchased one time and (so long as sites are networked together and use the same license) no further software is required.
- Unlimited number of clients allowed from one server License
- Customized software is available.



What is a Key Cabinet?

A Key Cabinet is made up of the following components:

- A metal cabinet that holds rows of receptor strips.
- Each receptor strip will hold 10 or 20 keys or rings of keys that are attached to an iFob.
- These receptor strips may have a locking solenoid for each position. This is generally true for high security markets.
- A POD on each cabinet holds up to 3,000 transactions and may be timed to batch information to the database if live data transfer cannot be completed.



How does the Key Cabinet work?

- Keys to assets are attached to iFobs and locked in a key cabinet. You may choose a fixed position cabinet or one using random return. If you are using random return, your staff will query the POD on the key cabinet for the key number and its location in the cabinet.
- The employee then scans his ID card or uses the biometric reader along with this four digit personal pin number to open the key cabinet.
- If access to the cabinet has been granted, the employee may then remove the key or keys they need. If they take additional keys, an alarm will sound and e-mail or text messages are sent to supervisors or managers.
- When your employee is finished with the key(s), he badges back into the cabinet and replaces the keys. In a fixed cabinet he will return it to the same slot he took it from, if he places it in the wrong slot it will alarm and give him the correct position to move it to. If you are using random return, the key can be placed in any available slot.



System Warranty

- 12 month warranty for software and hardware provided Free of Charge
- Support Contract available which includes extended warranty for software and hardware beyond 12 months, free software updates, bespoke development, telephone and on-site support and training. 98% of our customers choose to take this option.



Pricing – Depends on your property size

- Dependent on size of cabinet and how many you need.
- How many receptor strips are needed in each cabinet?
- Will they be locking or non-locking or a combination of both?
- Do you want to use a prox or swipe card reader or a biometric device to access the cabinet?



What Customers Like About Our Cabinets

- Cabinets and the software can operate independently. If your network or the computer goes down, your key cabinet will still work and then pass history over to the computer when it comes back online.
- The polycarbonate door allows for a visual audit of the keys and the POD 10 digit key pad allows for position query without a computer.
- The software is very simple to use.
- Key attachments are secure.
- Software is fully networked and scalable
- Curfews and alarms help keep keys from leaving your property.
- Access to keys and software can be limited to comply with corporate directives.
- Cabinets can hold both locking and non-locking receptor strips

